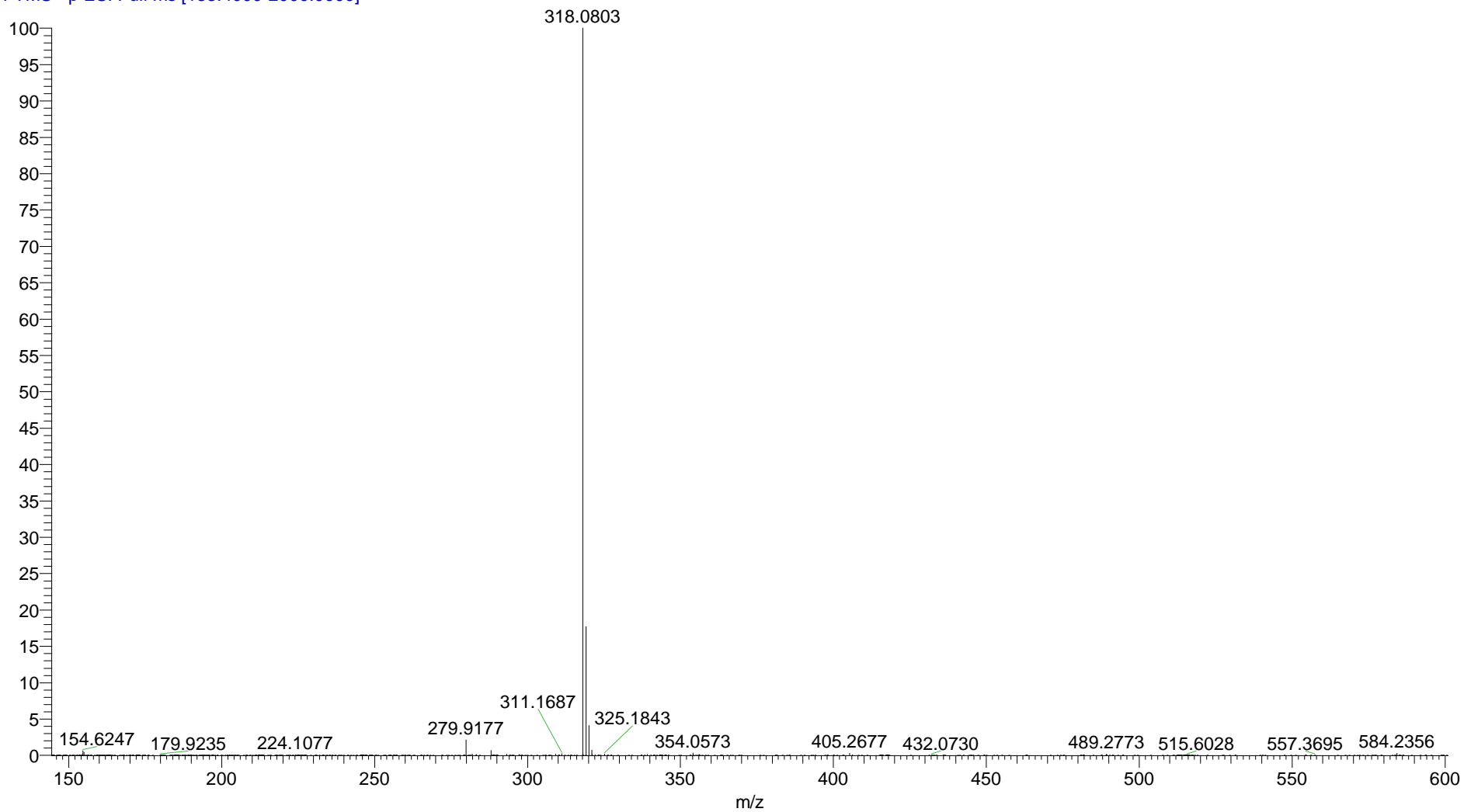


110823_OLS_2_132 #57-78 RT: 0.25-0.35 AV: 22 SB: 14 0.17-0.23 NL: 7.78E8
T: FTMS - p ESI Full ms [133.4000-2000.0000]



SAMPLE: 25533 O.SYMES OLS 2 132

THEORETICAL MASS FOR C₁₆H₁₆NO₄S⁻ = 318.0806

FOUND MASS = 318.0803 ERROR: PPM -0.94